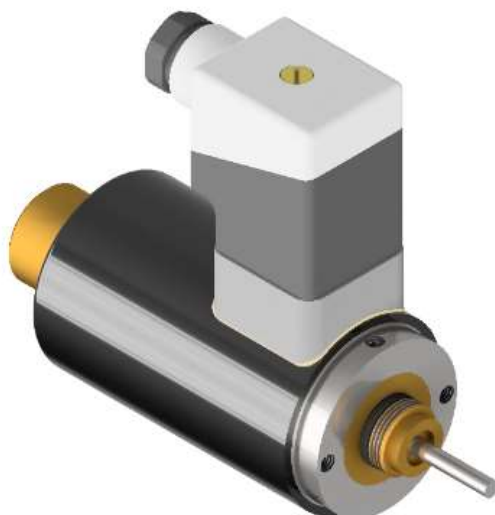
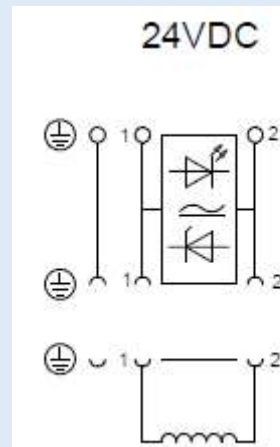


## Solenoid FL



### Solenoid FL 24VDC

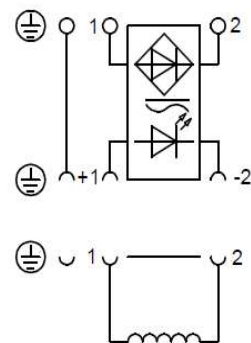
<b>Voltage</b>	24VDC
<b>Current</b>	1.55A
<b>Watt</b>	37.0W
<b>Force</b>	80N
<b>AT</b>	-20°C to +40°C / -4°F to +104°F
<b>ED</b>	100%
<b>IP</b>	65



## Solenoid FL 115VAC

<b>Voltage</b>	115VAC
<b>Current</b>	0.335A
<b>Watt</b>	38.5W
<b>Force</b>	80N
<b>AT</b>	-20°C to +40°C / -4°F to +104°F
<b>ED</b>	100%
<b>IP</b>	65

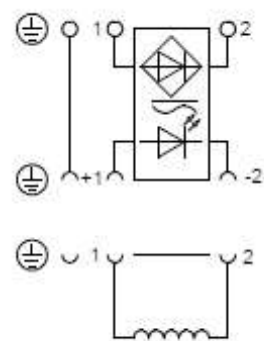
### 115V AC



## Solenoid FL 125VDC

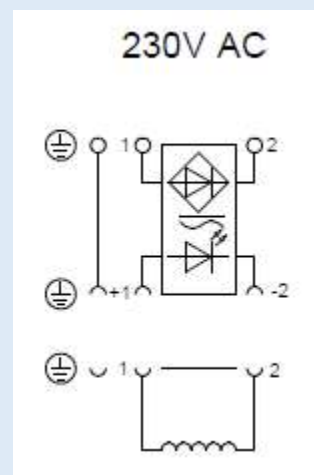
<b>Voltage</b>	125VDC
<b>Current</b>	0.3A
<b>Watt</b>	37.5W
<b>Force</b>	80N
<b>AT</b>	-20°C to +40°C / -4°F to +104°F
<b>ED</b>	100%
<b>IP</b>	65

### 125V DC



## Solenoid FL 230VAC

<b>Voltage</b>	230VAC
<b>Current</b>	0.186A
<b>Watt</b>	38.0W
<b>Force</b>	80N
<b>AT</b>	-20°C to +40°C / -4°F to +104°F
<b>ED</b>	100%
<b>IP</b>	65



**Commerzbank:**

Dimensions:

